

MAŁOPOLSKIE

Voivodeship capital	Kraków
Area	15,144 sq. km
Population	3,233,500
- urban	50.3%
Special Economic Zone	Kraków Technology Park
International airport	Kraków – Balice International Airport

Advantages

- Very high value of tourist attractions, immense impact of cultural heritage and beautiful nature
- Metropolitan functions of Kraków – culture, finance, services, transport junction
- Strong science and research potential
- Presence of high technology industries in the region
- An Interesting and diversified investment offer in this region
- Large supply of well-educated, young manpower
- Rich natural resources, enabling natural factors health treatment
- A well-developed banking system
- A developed network of business support institutions.

SPECIAL ECONOMIC ZONE KRAKÓW TECHNOLOGY PARK



THE MAŁOPOLSKIE VOIVODESHIP – REGION PROFILE

The voivodeship's capital, Kraków (over 740 thousand inhabitants), is a historic capital of Poland, and even today – the cultural capital of the country and its major tourist attraction. It is also Poland's second greatest university centre, with great concentration of R&D institutions. The potential of prospective labour in terms of education is enormous, not only for the number of graduates, but also in regard to the diversity and quality of education. There are 16 universities and other institutions of higher education, including the renowned Jagiellonian University (established in 1364, the second oldest in Central Europe, after Prague), Kraków University of Technology, University of Mining and Metallurgy (number one in ranking of all Polish technical universities – and, contrary to its name, the leader in information technology, robotics, automation and telecommunication faculties). Other higher education institutions include: the University of Economics, University of Agriculture, Academy of

Fine Arts and others. At present, the total number of students exceeds 140 thousand.

The Małopolska region is responsible for generating 7.4% of Poland's GNP, and is ranked fourth in the country for its economic position nation-wide. The Małopolska industry profile is now considerably more diverse than it used to be before 1980. Prevailing over the formerly strongest sectors of steel, chemicals, mining and tobacco are now the modern industries, including: cables, telecommunications, information





SPECIAL ECONOMIC ZONE KRAKÓW TECHNOLOGY PARK

technology and pharmaceuticals as well as printing and building materials. However, services, both commercial and non-commercial, are the most rapidly developing economy sector in the region. Due to the region's clean natural environment, beautiful landscape, numerous national parks, plentiful tourist attractions and good transportation infrastructure, the most rapidly developing services are those associated with tourism, spa resorts, recreation and sports. There are over 1,050 hotels and guesthouses, which provide over 65 thousand beds (12% of Poland's total). That puts the region in the first place in this regard.

All the advanced technologies mentioned above (IT, telecommunications, etc.) as well as also electronics, biotechnologies, medical technologies, machinery, printing and construction-related branches are the preferred areas of business activity for further investment. The economic growth strategy of the region envisages further, and greater, involvement of foreign investment. The value of direct foreign investment has been systematically growing. It reached an estimated USD 4.2 billion by the end of 2001 (USD 1,309 per person). Foreign investors are mostly interested in manufacturing, trade and repair, financial products and services as well as electrical energy supplies.

One of the tools to attract new investment, and also to encourage further expansion of the already active business enterprises, is the Special Economic Zone – Kraków Technology Park, established in 1998. Unlike in the other special economic zones in Poland, the companies representing the most advanced technologies may also benefit from the public aid programme there.

SPECIAL ECONOMIC ZONE - KRAKÓW TECHNOLOGY PARK

The Special Economic Zone – Kraków Technology Park was established in 1998. Its territory, appropriated for industrial development (greenfield investment projects), consists of four subzones, with the total area of about 122 ha, located in Kraków and Tarnów:

- Jagiellonian University Technology Park, the Pychowice District – 36.2 ha;

- Technology Park of the Kraków University of Technology, the Czyżyny District – 29.5 ha;
- T. Sendzimir Steelworks Technology Park, the Branice District – 35 ha;
- Tarnów Industrial Cluster “Plastic Valley” – the Town of Tarnów – 21.4 ha.

Over 60 ha, including 55 ha in Kraków and 8 ha in Tarnów (a town 60 km to the east of Kraków), remain available for greenfield investment.

BRIEF DESCRIPTION OF THE GROUNDS

General Information:

Kraków is located at the crossroads of trans-European communication routes, both road and rail, heading East-West and North-South (Germany, Austria, Hungary, Czech Republic, Slovakia, Russia, Ukraine).

There is an international airport in Kraków-Balice, one of two international airports in Poland (passenger and cargo), with daily direct flights to most of the European capitals (London, Paris, Rome, Copenhagen, Berlin, Frankfurt, Vienna, Zurich, Geneva) as well as direct connections to New York, Chicago, Toronto and Tel Aviv.

Distance from the investment grounds to a motorway: 5-10 km in Kraków.

Distance to the airport: 7-15 km in Kraków (20-35 minutes), 80 km in Tarnów (1.5 hour).

Distance to the EU border: 550 km (Germany).

Distances to selected cities in Europe: Berlin – 650 km, Rome – 1,550 km, Paris – 1,600 km, Vienna – 380 km, Budapest – 400 km, Kiev – 750 km and Moscow – 1,500 km.

Time to the EU border: 5.5 hours.

Distance to non-EU borders: 100 km (Slovakia), 120 km (Czech Republic).

Time to non-EU border: 1.5 hours.

The three Kraków locations are privileged in terms of the availability of hotels, restaurants, live music clubs, sports and recreation facilities (Aqua Park, bicycle lanes, tennis courts, horseback riding clubs) and tourist attractions. Also schools with the entire curriculum in the English/French language are available there, as well as uncountable cultural institutions like: theatres, cinemas, art galleries, concert halls, etc.

Within 1-1.5 hour's time from the Special Economic Zone – Kraków Technology Park, there are mountain areas, goods for skiing and hiking, and spa resorts, accessible via road or railway.

JAGIELLONIAN UNIVERSITY TECHNOLOGY PARK (Pychowice)

Area of about 36.2 ha, located in the southwestern part of Kraków in the Dębniki District (sector Pychowice). A part of the development plan for the Jagiellonian University 3rd Campus in Pychowice (total area of 30-40 ha). Access via Kobierzyńska Street, Gen. Grotta-Roweckiego Street and Gronostajowa Street. Distance from the city centre: ca. 4 km. Flat land, hills of 1-2 metre high. Undeveloped area, appropriated for greenfield investment.

Price: around USD 40 per 1 sq. m (negotiable).

Infrastructure:

Power network – overhead main line of 110 kV.

Water and sewerage – main water pipe for potable water ø1200 mm, the municipal water pipe network, sanitary sewerage through a collector “A” 110/185 cm. Heat distribution network – possibility of connecting directly to the main municipal heat distribution network ø800 mm, in close vicinity.

Gas grid – natural high-methane gas (0,8 MPa, ø65 mm), also a possibility of connecting to a gas pipe 500 m at the Park's boundary.

Telecommunications network – the existing municipal telecommunications network.

A road (with all utilities) under construction, providing access to the Jagiellonian University 3rd Campus and the JU Technology Park.

Development conditions:

The area defined as “community services area”, no environmental or any other restrictions regarding construction.

Preferred investors:

Companies representing advanced technologies sectors (see the regulations for investment in SEZ KPT). A US Motorola Software Centre on site.

TECHNOLOGY PARK OF THE KRAKÓW UNIVERSITY OF TECHNOLOGY (Czyżyny)



Undeveloped land for greenfield investment. Area of circa 29.5 ha, located 3 km from the city centre in the Czyżyny District, between the centre of Kraków and Nowa Huta (industrial district). Access via Aleje Jana Pawła II Avenue and Bora-Komorowskiego Street. Flat area, with advantageous geo-technical conditions.

Price: around USD 50 per 1 sq. m (negotiable).



Business and Innovation Center Copernicus



SPECIAL ECONOMIC ZONE KRAKÓW TECHNOLOGY PARK

Infrastructure:

Power network – a main feed point of 110 kV located within the area.

Water and sewerage – water supply $\varnothing 225$ mm, fire-fighting water $\varnothing 80$ mm, sanitary sewerage $\varnothing 300$ mm and storm sewerage $\varnothing 800$ mm.

Heat distribution network – $\varnothing 300$ mm; the possibility of connecting directly to a heat and power station nearby.

Gas grid – in the immediate neighborhood.

Telecommunications network – the existing TP S.A. network.

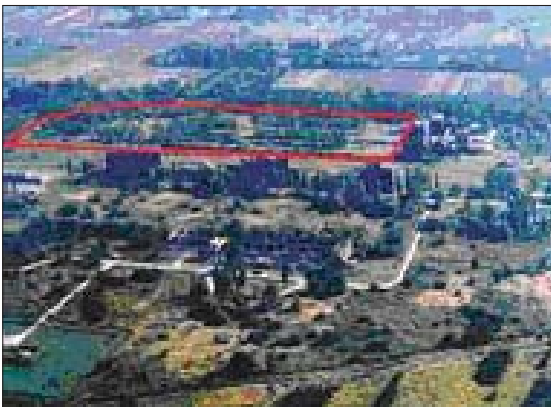
Development conditions:

The area of Technology Park, regarded as a “community services area”, constitutes a part of the Czynny district development plans. No restrictions resulting from environment or historic monuments preservation requirements.

Preferred investors:

Companies representing the advanced technology sector. Operating here are: ComArch (software), Pfaffenhain PL (mechatronics). AMK Kraków (industrial technology line design). Az-Soft.

3. T. SENDZIMIR STEELWORKS TECHNOLOGY PARK (Branice)

**Area and location:**

Area of about 35 ha (about 21 ha remains available), located 15 km from the city centre, eastern part of Kraków, the Nowa Huta District (sector Branice). Flat area of high durability. Groundwater 10-15 metres below land surface. All utilities available in the immediate neighborhood or within investment plots.

Price: around USD 12 per 1 sq. m (negotiable).

Infrastructure:

Power supply – cable network 6 kV and 0.4 kV, a possibility to connect to a main transformer station GST 9.



Water pipe network – $\varnothing 100$ mm, 0.25 MPa, supply of industrial water - $\varnothing 100$ mm, 0.1 MPa; a potable water purification plant located within the area and a sewage treatment plant nearby.

Gas grid – $\varnothing 65$ mm, 0.8 Mpa.

Heat distribution network – runs through the area, $\varnothing 350$ mm and $\varnothing 300$ mm.

Telecommunications network – the municipal telecommunications network available.

Development conditions:

The area was primarily appropriated for a green belt surrounding the T. Sendzimir Steelworks. This land is not polluted, without mining or other damage. There are no restrictions of any kind concerning the types of business activities allowed within this territory, neither environmental protection restrictions for development.

Preferred investors:

All kinds of manufacturing activity are allowed within the T. Sendzimir Steelworks Technology Park. In September 2001, the American printing company RR Donnelley completed the construction of their new printing plant (projected employment will exceed 600 persons).

TARNÓW INDUSTRIAL CLUSTER TECHNOLOGY PARK

Owned by Tarnów Industrial Cluster „Plastic Valley”, a joint-venture company. 21.4 ha of land, located in northwestern part of Tarnów, register unit of Tarnów